

CAMERA

DIFFICULTY



MODERATE

THUMBNAILED TO SHOW YOU THE WAY!

1. From the parking area, locate the trail behind you and turn left. (Do not cross the street.)
2. Walk past the building and continue along the creek.
3. Keep left at the brick building.
4. Continue beyond the overpass until you reach the bridge where you will find the post.
5. Turn around and retrace your steps to arrive back at your vehicle.

Distance: 1.45 miles

Restrooms: No

Dog Friendly: Yes

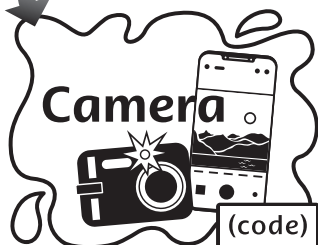
Stroller Friendly: Yes
(crushed stone)

Playground: No

Wheelchair Friendly: No

Location: Lebanon Valley Rail Trail, Jonestown Trailhead

YOUR MARKER RUBBING SHOULD LOOK LIKE THIS:



READ MORE ABOUT IT!

- *Russell and the Lost Treasure* by Rob Scotton
- *Flotsam* by David Wiesner
- *Half a Chance* by Cynthia Lord

A LITTLE

SNIPPET
OF INFORMATION!



The world's largest camera, built in 1899, was called "The Mammoth" and weighed 1,400 pounds.

Don't forget to enter the code from the marker rubbing posts in **Beanstack!** See p. 20

DIFFICULTY



EASY

CHALK

Distance: 0.47 miles

Restrooms: Yes

Dog Friendly: Yes

Stroller Friendly: Yes

Playground: Yes

Wheelchair Friendly: Yes

Location: Gloninger
Woods Park

THUMBNAILED TO SHOW YOU THE WAY!

1. Locate the park sign and follow the trail to the right of the sign.
2. Continue around the baseball field and follow the outside perimeter trail.
3. Continue through the woods.
4. Before the black fence, turn left to find the post.
5. Walk past the green shed, then follow the steps to your right.
6. At the bottom, turn right and return back to the starting point.

YOUR MARKER RUBBING
SHOULD LOOK LIKE THIS:



READ MORE ABOUT IT!

- *The Case of the Missing Chalk Drawings* by Richard Bryne
- *Amelia Bedelia Chalks One Up* by Herman Parish
- *Chalk* by Bill Thomson

A LITTLE

SNIPPET

OF INFORMATION!



**Lesser-known uses
for chalk include
gymnasts, weight
lifters, rock climbers,
and other athletes.**

Visit www.golebcounty.org for information on marker status, directions to parks, and more!

COLLAGE

DIFFICULTY



MODERATE

THUMBNAILS TO SHOW YOU THE WAY!

1. From the parking area near the flags, walk toward the East Pavilion, then turn right and follow the trail.
2. Continue toward the playground, then turn right.
3. Before reaching the brown gate, turn right at the park sign and follow the trail downhill.
4. The post is among the trees.
5. To return, continue following the trail in your current direction.

Distance: 0.57 miles

Restrooms: Yes

Dog Friendly: No

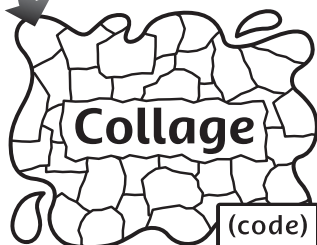
Stroller Friendly: Yes

Playground: Yes

Wheelchair Friendly: Yes

Location: South Hills Park

YOUR MARKER RUBBING SHOULD LOOK LIKE THIS:



READ MORE ABOUT IT!

- *Radiant Child: The Story of Jean-Michel Basquiat* by Javaka Steptoe
- *Legacy: Women Poets of the Harlem Renaissance* by Nikki Grimes
- *Collage Workshop for Kids* by Shannon Merenstein

A LITTLE

SNIPPET
OF INFORMATION!



The torn paper technique involves tearing paper into various shapes and sizes and creating something new.

Don't forget to enter the code from the marker rubbing posts in **Beanstack!** See p. 20

DIFFICULTY



MODERATE

CRAYON

Distance: 0.53 miles

Restrooms: Yes

Dog Friendly: No

Stroller Friendly: Yes

Playground: Yes

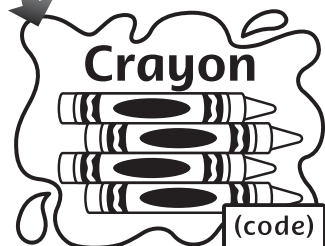
Wheelchair Friendly: Yes

Location: Jonestown
Community Park

THUMBNAILS TO SHOW YOU THE WAY!

1. From the parking area near the tennis courts, locate the baseball field to the left of the courts.
2. Follow the trail to the left around the baseball field.
3. Keep left at the next two intersections.
4. Continue past the blue building and tennis courts, then turn right and continue downhill past the basketball court.
5. At the bottom of the hill, look for the post.
6. To return to your vehicle, continue in your current direction following the trail back to the parking area.

YOUR MARKER RUBBING
SHOULD LOOK LIKE THIS:



READ MORE ABOUT IT!

- *The Day the Crayons Quit* by Drew Daywalt
- *Amber Brown is Not a Crayon* by Paula Danziger
- *Creepy Crayon* by Aaron Reynolds

A LITTLE

SNIPPET

OF INFORMATION!



*Crayola has made
more than 100 billion
crayons, enough to
circle the earth almost
five times.*

Visit www.golebcounty.org for information on marker status, directions to parks, and more!

DREAMS

DIFFICULTY



HARD

THUMBNAILS TO SHOW YOU THE WAY!

1. From the small parking area off Pinch Road, walk to the left of the park map and past the yellow gate.
2. At the Y, keep left and follow trail 5 marked with yellow blazes.
3. At the next Y (double yellow blaze on left and single yellow blaze straight), bear right and follow the trail uphill.
4. Continue on the trail past trail marker 6.
5. At trail marker 9, turn left and follow the blue and yellow blazes where you will find the post.
6. To return, continue in your current direction following the blue and yellow blazes.
7. Continue through the clearing and downhill.
8. At the intersection, turn left for trail 5 and follow the white blazes.
9. Continue past the yellow gate and several houses on the paved road.
10. Continue on the gravel trail past the next yellow gate and keep right for trail 5.
11. At the next intersection, stay to your right to continue following trail 5 back to the parking area.

Distance: 1.83 miles

Restrooms: Yes

Dog Friendly: Yes

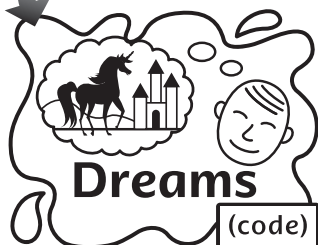
Stroller Friendly: No

Playground: No

Wheelchair Friendly: No

Location: Clarence Schock Memorial Park

YOUR MARKER RUBBING SHOULD LOOK LIKE THIS:



READ MORE ABOUT IT!

- *Dreamers* by Yuyi Morales
- *The Vanderbeekers of 141st Street* by Karina Yan Glaser
- *Applemando's Dreams* by Patricia Polacco

A LITTLE

SNIPPET
OF INFORMATION!



Dreaming is most common in the morning.

Don't forget to enter the code from the marker rubbing posts in **Beanstack!** See p. 20

DIFFICULTY



EASY

FASHION

Distance: 0.45 miles

Restrooms: No

Dog Friendly: No

Stroller Friendly: Yes

Playground: No

Wheelchair Friendly: Yes

Location: Lebanon

Valley College

THUMBNAILS TO SHOW YOU THE WAY!

1. Locate the Arnold Sports Center building with the water fountain in front and the fire hydrant to the left of the entrance near the sidewalk.
2. Follow the sidewalk beside the fire hydrant and toward the athletic fields.
3. Cross the small metal bridge, then continue to the right of the softball field behind home plate.
4. Continue around right field and past the bleachers.
5. Locate the emergency call box near the sidewalk, then follow the sidewalk to the left.
6. At the intersection, turn right and continue on the sidewalk to find the post.
7. To return to your vehicle, continue in your current direction.
8. Carefully follow the road to the left and back to the parking area.

YOUR MARKER RUBBING
SHOULD LOOK LIKE THIS:



READ MORE ABOUT IT!

- *Naked Mole Rat Gets Dressed* by Mo Willems
- *Nancy Drew and the Clue Crew: The Fashion Disaster* by Carolyn Keene
- *Marion Strikes a Pose* by Callie Barkley

A LITTLE

SNIPPET

OF INFORMATION!



*The average American
owns seven pairs of
blue jeans.*

Visit www.golebcounty.org for information on marker status, directions to parks, and more!

FLOWER GARDEN

DIFFICULTY



MODERATE

THUMBNAILED TO SHOW YOU THE WAY!

1. From the small parking area, follow the trail to the right and away from the park entrance.
2. Follow the blue blazes and stay to your right.
3. At the first blue and red blazed intersection, keep right.
4. Continue following the blue trail and remain to your right.
5. Cross two wooden bridges, then turn right.
6. Cross the next bridge, then stay left for the red trail.
7. The post is along the red trail.
8. To return, continue in your current direction.
9. Cross a wooden bridge and keep left.
10. Cross the basketball court, then follow the gravel drive uphill past the pond and the bathroom.
11. Continue following the driveway past the baseball field and playground.
12. Locate the trail on your left near the pavilion and beyond the sandbox.
13. Follow the trail along the cornfield and into the woods.
14. At the intersection, turn right and follow the blue trail back to your vehicle.

Distance: 1.07 miles

Restrooms: Yes

Dog Friendly: Yes

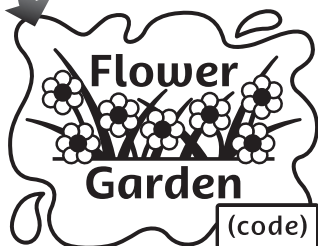
Stroller Friendly: No

Playground: No

Wheelchair Friendly: No

Location: H.M. Levitz
Memorial Park

YOUR MARKER RUBBING
SHOULD LOOK LIKE THIS:



READ MORE ABOUT IT!

- *Bloom* by Kenneth Oppel
- *Have You Ever Seen a Flower?* by Shawn Harris
- *The Secret Garden* by Frances Hodgson Burnett

A LITTLE

SNIPPET
OF INFORMATION!



*Flowers can come
in any color except
true black and
emerald green.*

Don't forget to enter the code from the marker rubbing posts in **Beanstack!** See p. 20

DIFFICULTY



MODERATE

LIBRARY

Distance: 0.40 miles

Restrooms: Yes

Dog Friendly: Yes

Stroller Friendly: No

Playground: No

Wheelchair Friendly: No

Location: Quittie Creek
Nature Park

THUMBNAILS TO SHOW YOU THE WAY!

1. Locate the small wooden fence to the left of the park sign, then look for the gravel trail to the left of the small wooden fence.
2. Follow the trail into the woods and past the tall grass near the bench.
3. At the next bench before the clearing, stay right and continue following the trail around the tall grass.
4. At the next intersection, go straight and follow the gravel trail into the woods.
5. Turn left at the next intersection, then turn at the next left, followed by an immediate right.
6. Turn at the next left and find the post.
7. To return to the parking area, continue straight. Listen for the water.
8. Turn right onto the mulched trail, then turn right at the bottom of the hill.
9. Carefully follow the driveway back to the lower parking area.

YOUR MARKER RUBBING
SHOULD LOOK LIKE THIS:



READ MORE ABOUT IT!

- *The Library Fish* by Alyssa Satin Capucilli
- *Bats at the Library* by Brian Lies
- *The Night Librarian* by Christopher Lincoln

A LITTLE

SNIPPET

OF INFORMATION!



Some libraries have started lending out unconventional items like tools, musical instruments, and seeds for gardening.

Visit www.golebcounty.org for information on marker status, directions to parks, and more!

NATURE

DIFFICULTY



HARD

THUMBNAILS TO SHOW YOU THE WAY!

1. From the parking area, walk away from the nature center and locate the trail marked Conservation Trail at the base of the hill.
2. Follow the Conservation Trail uphill and away from the nature center. Instead of turning left at the T, turn right and follow the trail uphill by the field.
3. Continue straight at the top of the hill and follow the signs for Conservation Trail. (This puts you on the same trail where you will find the post.)
4. You can locate the post in the woods as you make your way downhill.
5. To return to your vehicle, continue in your current direction.
6. Continue following Conservation Trail marked with green blazes and arrive back at the parking area.

Distance: 1.41 miles

Restrooms: Yes

Stroller Friendly: No

Wheelchair Friendly: No

Playground: No

Dog Friendly: Yes

Location: Middle Creek
Wildlife Management Area

YOUR MARKER RUBBING
SHOULD LOOK LIKE THIS:



READ MORE ABOUT IT!

- *Wonder Walkers* by Micha Archer
- *The Moth Keeper* by K. O'Neill
- *Fun With Nature* by Mel Borking

A LITTLE SNIPPET OF INFORMATION!



*An inch of rain is
equal to 10-15 inches
of snow.*

Don't forget to enter the code from the marker rubbing posts in **Beanstack!** See p. 20

DIFFICULTY



EASY

ORIGAMI

Distance: 0.32 miles

Restrooms: Yes

Dog Friendly: Yes

Stroller Friendly: Yes

Playground: Yes

Wheelchair Friendly: No

Location: Myerstown
Recreation Area

THUMBNAILED TO SHOW YOU THE WAY!

1. Locate the park sign near the portable toilet.
2. Follow the trail past the sign and over the wooden bridge.
3. Cross another bridge, then turn right at the next intersection.
4. Continue to the left of the playground and walk across the basketball court.
5. At the end of the court, turn left and walk toward the creek.
6. The post is near the water.
7. To return to your vehicle, follow the creek to your left.
8. When you arrive at the bridge, turn right, and continue to your right back to the parking area.

YOUR MARKER RUBBING
SHOULD LOOK LIKE THIS:



READ MORE ABOUT IT!

- *Animal Origami* by Fumiaki Shingu
- *Diggin' Dirt: Science Adventures with Kitanai the Origami Dog* by Thomas K. Troupe
- *The Strange Case of Origami Yoda* by Tom Angleberger

A LITTLE

SNIPPET

OF INFORMATION!



The goal of origami is to transform a flat sheet of paper into a sculpture.

Visit www.golebcounty.org for information on marker status, directions to parks, and more!

PAINT

DIFFICULTY



THUMBNAILS TO SHOW YOU THE WAY!

1. Locate the pavilion, then walk toward the basketball court.
2. Continue past the chain link fence, then walk behind the baseball backstop.
3. Continue around the perimeter of the field, walking back toward the pavilion.
4. When you arrive at the line of trees on your right, look for the post.
5. Continue back to your vehicle or check out the new community mosaic on the back of the pavilion.

Distance: 0.20 miles

Restrooms: No

Dog Friendly: No

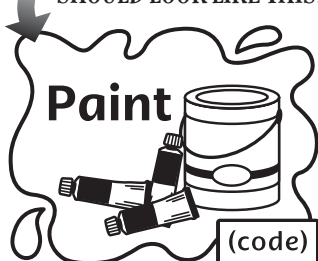
Stroller Friendly: No

Playground: Yes

Wheelchair Friendly: No

Location: Hilltop Playground

YOUR MARKER RUBBING SHOULD LOOK LIKE THIS:



READ MORE ABOUT IT!

- *The Dot* by Peter H. Reynolds
- *The Artist Who Painted a Blue Horse* by Eric Carle
- *Doodleville: Art Attacks* by Chad Sells

A LITTLE SNIPPET OF INFORMATION!



The Golden Gate Bridge has been repainted only three times since 1937.

Don't forget to enter the code from the marker rubbing posts in **Beanstack!** See p. 20

DIFFICULTY



MODERATE

PATTERNS

Distance: 0.72 miles

Restrooms: No

Dog Friendly: Yes

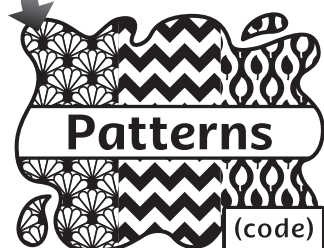
Stroller Friendly: No

Playground: No

Wheelchair Friendly: No

Location: Lebanon Valley
Rail Trail/Union Canal
Tunnel Park

YOUR MARKER RUBBING
SHOULD LOOK LIKE THIS:



READ MORE ABOUT IT!

- *Lots & Lots of Zebra Stripes: Patterns in Nature* by Stephen R. Swinburne
- *Swirl By Swirl: Spirals in Nature* by Joyce Sidman
- *Growing Patterns: Fibonacci in Nature* by Sarah C. Campbell

A LITTLE

SNIPPET

OF INFORMATION!



**Leopards and
ladybugs are spotted;
angelfish and zebras
are striped.**

THUMBNAILS TO SHOW YOU THE WAY!

1. From the parking area, follow the rail trail to the right.
2. Continue to the Union Canal Park sign and turn right.
3. At the bottom of the trail, turn left and follow the Red Fox Trail.
4. Follow the trail along the perimeter of the field, then turn right at the line of trees on your right. The post is nearby.
5. To return to the starting point, continue in your current direction.
6. Pass the tan shed on your left, then make your next right.
7. Turn left at the next two intersections, then follow the rail trail back to the parking area.

Visit www.golebcounty.org for information on marker status, directions to parks, and more!

RAINBOW

DIFFICULTY



MODERATE

THUMBNAILED TO SHOW YOU THE WAY!

1. Follow the grass to the left of the park sign while keeping the chain link fence on your left.
2. Turn right at the first bench, then turn right and follow the orange blazes.
3. Turn left at the next intersection and follow the blue blazes.
4. Turn at the next left and follow the yellow blazes.
5. Go straight at the next intersection, then immediately turn left.
6. The post is near the bridge.
7. To return to your vehicle, continue in your current direction.
8. Halfway up the hill, turn left and follow the orange blazes.
9. At the bench, turn right and follow the grass back to the parking area.

Distance: 0.52 miles

Restrooms: No

Dog Friendly: Yes

Stroller Friendly: No

Playground: No

Wheelchair Friendly: No

Location: North Londonderry Township Trails

YOUR MARKER RUBBING SHOULD LOOK LIKE THIS:



READ MORE ABOUT IT!

- *Rainbow Fish* by Marcus Pfister
- *Planting a Rainbow* by Lois Ehlert
- *Fangirl* by Rainbow Rowell

A LITTLE SNIPPET OF INFORMATION!



Sometimes a double rainbow forms, with a fainter rainbow above the main one.

Don't forget to enter the code from the marker rubbing posts in **Beanstack!** See p. 20

DIFFICULTY



HARD

STAINED GLASS

Distance: 1.31 miles

Restrooms: Yes

Dog Friendly: Yes

Stroller Friendly: No

Playground: No

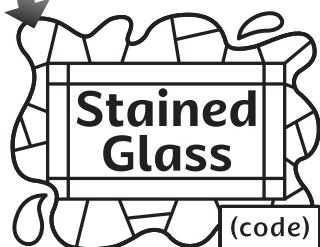
Wheelchair Friendly: No

Location: Swatara

State Park, LVRT

Lickdale Trailhead

YOUR MARKER RUBBING
SHOULD LOOK LIKE THIS:



THUMBNAILED TO SHOW YOU THE WAY!

1. Locate the park sign and follow Roundabout Loop to the right of the sign.
2. At your first intersection near the wooden guard rail, turn right.
3. Carefully cross the street and continue straight on the trail.
4. The post is near the creek and metal railing.
5. Turn around and retrace your steps.
6. At the wooden guardrail, keep straight and continue back to your vehicle.

READ MORE ABOUT IT!

- *It Fell From the Sky* by The Fan Brothers
- *Greenglass House* by Kate Milford
- *The Hidden Window Mystery* by Carolyn Keene

A LITTLE

SNIPPET

OF INFORMATION!



The stained-glass windows in Notre Dame are original to its construction in the 1200s.

Visit www.golebcounty.org for information on marker status, directions to parks, and more!

SUNSET

DIFFICULTY



MODERATE

THUMBNAILED TO SHOW YOU THE WAY!

1. From the parking area near North 2nd Street (closest to East Baseball Field), locate the gravel drive near the trees and follow it uphill.
2. Turn left at the Stoevers Dam Park sign.
3. At the two large rocks and mile marker, turn right and follow the trail.
4. Cross the wooden bridge near the red barn.
5. Locate the four large pine trees on your right, then follow the trail into the woods.
6. If you arrive at the fishing pier, you have gone too far.
7. Locate the post along the nature trail in the woods.
8. To return to your vehicle, continue in your current direction.
9. Exit the woods following the trail and turn right for the gravel trail near the driveway/parking area.
10. Follow the trail across the drive and continue to the right, following the trail along the water.
11. Pass the cemetery and continue over the wooden bridge.
12. Turn right at the large rocks and follow the drive downhill and to your right.

Distance: 1.43 miles

Restrooms: Yes

Dog Friendly: Yes

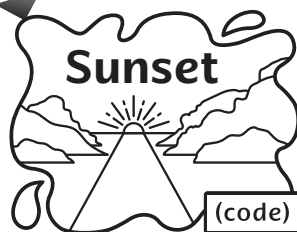
Stroller Friendly: Yes
(crushed stone)

Playground: No

Wheelchair Friendly: No

Location: Stoevers
Dam Park

YOUR MARKER RUBBING
SHOULD LOOK LIKE THIS:



READ MORE ABOUT IT!

- *Goodnight, Goodnight, Construction Site* by Sherri Rinker
- *All the World* by Elizabeth G. Scanlon
- *The Remarkable Journey of Coyote Sunrise* by Dan Gemeinhart

A LITTLE

SNIPPET
OF INFORMATION!



*By the time you
see the sun set, it's
actually gone.*

Don't forget to enter the code from the marker rubbing posts in **Beanstack!** See p. 20